

## Registration Workshop

Registration by Fax or E-Mail before May 21 is appreciated.  
Fax: +49-30-838 54399  
e-Mail: [vivian.kral@fu-berlin.de](mailto:vivian.kral@fu-berlin.de)

## Venue

**Harnack-Haus of the Max-Planck Gesellschaft**  
Innestr. 16-20  
14195 Berlin-Dahlem  
Tel.: +49-30- 84 13 38 00  
Fax: +49-30- 84 13 38 01  
e-Mail: [info@harnackhaus-berlin.mpg.de](mailto:info@harnackhaus-berlin.mpg.de)

Registration by Fax or e-Mail, please use keyword **"AXLR8"** for room reservation at Harnack-Haus Berlin.

## From Berlin Airports to Harnack-Haus

### Berlin Tegel (TXL) airport

Bus 109 (Direction Zoologischer Garten)  
- Change Jakob-Kaiser-Platz to Underground (U-Bahn) U7  
U7 (Direction Rudow)  
- Change Fehrbelliner Platz to U3  
U3 (Direction Krumme Lanke)  
to **Station "Thielplatz"**

### Berlin Schönefeld (SXF) airport

Bus X7 (Direction U Rudow)  
- Change: U Rudow to Underground (U-Bahn) U7  
U7 (Direction Rathaus Spandau)  
- Change Fehrbelliner Platz to U3  
U3 (Direction Krumme Lanke)  
to **Station "Thielplatz"**

## Harnack-Haus (Berlin-Dahlem)



**HUMANE SOCIETY INTERNATIONAL**  
UNITED KINGDOM



## The AXLR8 CONSORTIUM

**Horst Spielmann - Scientific Coordinator**  
**Monika Schäfer-Korting**

Freie Universität Berlin  
Department of Biology, Chemistry, Pharmacy  
Berlin, Germany  
[horst.spielmann@fu-berlin.de](mailto:horst.spielmann@fu-berlin.de)

**Troy Seidle – Assoc. Coordinator**  
**Emily McIvor**

HSI – Humane Society International  
London, United Kingdom  
[tseidle@hsi.org](mailto:tseidle@hsi.org)

**Greet Schoeters**

CARDAM (Centre for Advanced R&D on Alternative Methods) @ VITO  
Mol, Belgium  
[greet.schoeters@vito.be](mailto:greet.schoeters@vito.be)

## CONTACT

**Vivian Kral**

Freie Universität Berlin, Institute of Pharmacy  
Königin-Luise-Str. 2 + 4  
14195 Berlin, Germany  
Tel.: +49-30-838-53219  
Fax: +49-30-838-54399  
e-Mail: [vivian.kral@fu-berlin.de](mailto:vivian.kral@fu-berlin.de)

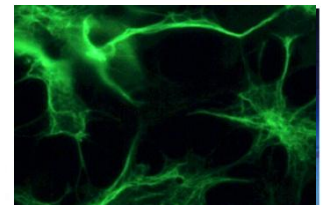
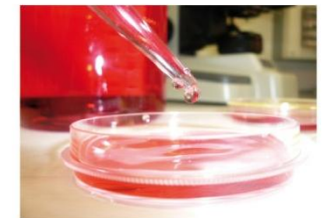
Homepage: [www.axlr8.eu](http://www.axlr8.eu)

DG Research and Innovation



**Accelerating the transition to a toxicity pathway-based paradigm for chemical safety assessment through internationally co-ordinated research and technology development.**

**AXLR8-3 Workshop 2012**  
**"Roadmap to Next Generation Safety Testing under Horizon 2020"**  
**11-13 June 2012, Berlin-Dahlem, Germany**  
**& Satellite Meeting on 10 June 2012**  
**"The REACH experience - new tools applied to risk assessment"**





## Sunday, 10 June 2012

### Public Satellite Meeting

#### "The REACH experience - new tools applied to risk assessment"

- 14:00 Welcome & Chairs:** Monika Schäfer-Korting & Horst Spielmann, AXLR8 & FU Berlin, DE
- 14:15 Toxicology in the 21<sup>st</sup> Century - update of the vision  
Mel Andersen, Hamner Institutes, US
- 14:45 REACH – the ECHA experience: new tools applied to risk assessment  
Derek Knight, ECHA, FI
- 15:15 The OECD QSAR toolbox - the OECD perspective  
Terry Schulz, OECD, FR
- 15:45 Improving read-across performance  
Saby Dimitrov, Burgas, BG
- 16:15 Coffee break**
- 16:45 EPA computational toxicology research programme  
Tom Knudsen, NCCT, EPA, US
- 17:15 The ITS approach - using non-animal methods for regulatory purposes, Robert Landsiedel, BASF, DE
- 17:45 Tox21C – the AoP (adverse outcome pathways) approach applied to REACH  
Kate Willett, HSI/HSUS, US
- 18:15 Characterising the exposome  
Greet Schoeters, VITO & CARDAM, BE
- 18:45 End of Satellite Meeting**

## Monday, 11 June 2012

### 8:30 MORNING SESSION

#### Session 1: International developments

##### Chairs: Julia Fentem & Robert Kavlock

- 8:30 Welcome & introduction to workshop goals  
Horst Spielmann, AXLR8 & FU Berlin, DE
- 8:45 SEURAT-1 update 2012  
Michael Schwarz, U Tübingen, DE
- 9:10 US Tox21 Consortium update 2012  
Bob Kavlock, EPA, US
- 9:35 OECD Molecular Screening Group & AOP work plan, Terry Schulz, OECD, FR
- 9:55 Coffee break**
- 10:15 Pathways of Toxicity Mapping Center  
Tomas Hartung, CAAT & CAAT-Europe, US & DE
- 10:40 EURL ECVAM - progressing validation  
Patric Amcoff, ECVAM-JRC, IT
- 11:05 Activities of the EPAA Platform of Science (PoS)  
Klaus Dieter Bremm, EPAA & Bayer, BE & DE
- 11:30 Coffee break**

- 11:45 "Horizon 2020" EU Commission proposal: needs and funding models.  
Bernard Mulligan, EU Commission DG R&I, BE
- 12:10 Russian Academy of Science programme "Human on a chip", Alexander Tonevitsky, Moskow, RU
- 12:35 Experimental models – "organ-on-a-chip"  
Donald Prater, FDA, US
- 13:00 Developing a human chip based platform for repeated dose toxicity, Uwe Marx, TissUse, DE

### 13:15 Lunch break

### 14:15 AFTERNOON SESSION

#### Chairs: Nathalie Alépée & Joanna Jaworska

#### Session 2: Common building blocks of pathway driven toxicity

- 14:15 Toxbank: a web-based warehouse for toxicity data management and modelling  
Barry Hardy, Douglas Connect, CH
- 14:40 General kinetics & reverse dosimetry modelling  
Mel Andersen, Hamner Institutes, US
- Session 3: Immune disorders/sensitisation**
- 15:30 Proof-of-concept studies -- Sens-it-iv  
Erwin Roggen, Novozymes, DK
- 15:55 Skin sensitization: MoA/AoP pathway elucidation  
Gavin Maxwell, Unilever, UK
- 16:20 Integrating non-animal test information into an adaptive testing strategy – skin sensitisation from theory to practice  
Joanna Jaworska, P&G, BE

### 16:45 Coffee break

#### Break-out Groups (BOGs)

- 17:00 **2 BOGs on "Common building blocks" & "skin sensitisation/immune disorders"**
- 19:00 Reconvene, Presentations from BOGs & Feedback
- 19:30 End of session**
- 20:00 Dinner (Harnack Haus)**

## Tuesday, 12 June 2012

### 9:00 MORNING SESSION

#### Session 4: Cancer/ Carcinogenicity

##### Chairs: Jürgen Borlack & Mel Andersen

- 8:30 *carcinoGENOMICS* - hES derived hepatocyte-like cells as tools for hazard assessment of chemical carcinogenicity, Ralf Herweg, Max Planck Inst, DE
- 9:00 *carcinoGENOMICS* – focused on MoA/AoP building block areas. Michael Ryan, U Dublin, IE

- 9:30 MoA/AoP – DNA damage pathway case study  
Hamner/ -Unilever study.  
Mel Andersen, Hamner Institutes, US

### 10:00 Coffee break

- 10:15 Computational models  
Aldo Benigni, Istituto Superiore di Sanità, IT
- 10:45 Bhas 42 cell transformation assay to predict carcinogens *in vitro*.  
Kiyoshi Sasaki, Hatano Res. Inst., JP
- 11.15 Carcinogen screening system based on carcinogenomics data. Fumiko Saito, Chemical Evaluation & Research Inst. CERI, JP

### 11:45 Coffee break

#### Session 5: Reproductive & developmental toxicity

##### Chairs: Robert Landsiedel & Tom Knudsen

- 12:00 ChemSCREEN: MoA/AoP pathway elucidation – developmental toxicology case studies EST  
Aldert Piersma, RIVM, NL
- 12:30 ChemSCREEN: MoA/AoP pathway elucidation – fertility. Bart van der Burg, BDS, NL
- 13:00 MoA/AoP pathway elucidation developmental toxicology. Tom Knudsen, NCCT, EPA, US
- 13:30 Lunch break**
- 14:30 Experimental human stem cell models – ESNATS,  
Jürgen Hescheler, U Cologne, DE
- 15:00 Practical 3R approaches to fulfillment of reprotox data registrations under REACH  
Robert Landsiedel, BASF, DE

### 15:30 Coffee break

#### Break-out Groups (BOGs)

- 15:45 2 BOGs on "Cancer/Carcinogenicity" and "Repro/Developmental Tox"
- 18:00 Reconvene, Presentations from BOGs & Feedback
- 19:00 End of session**
- 20:00 Dinner (Restaurant in Berlin)**

## Wednesday, 13 June 2012

### CLOSED SESSION

*Participants: AXLR8 Scientific Panel (SP) & AXLR8 Consortium*

#### Finalization of Workshop Report

- 09:00 Review of recommendations of BOGs 1-4
- 11:00 Coffee break**
- 11:15 *Draft workshop report "Roadmap to ITT"*
- 13:00 End of workshop**